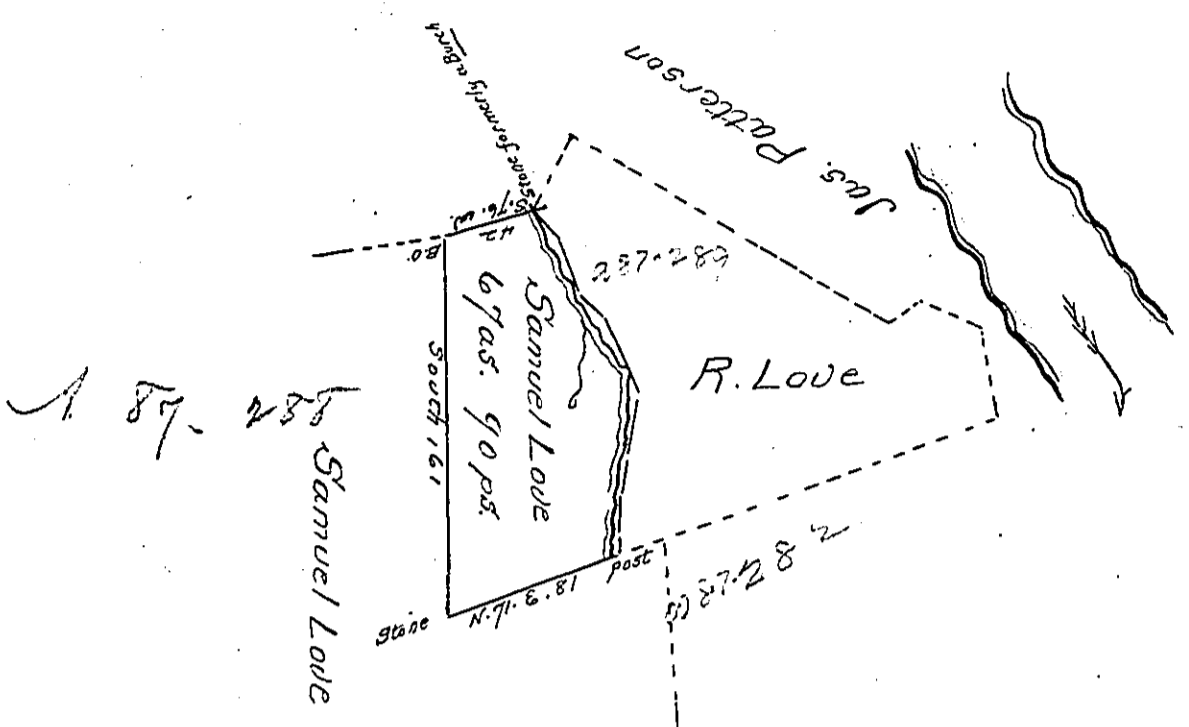


The course and Distance of the division line down the run from the post to the stone heap.

- N. 9. W. 9 ps.
- N. 15. E. 17
- N. 4. E. 14
- N. 10. E. 32
- N. 22 1/2 W. 32
- N. 43 1/2 W. 17
- N. 22 1/4 W. 20
- N. 45 1/4 W. 20 to the stone heap formerly a Burch.



Situate in Mean Township Lycoming County
 Survey d. on the 25th day of Nov. 1817 at the request of
 Present claimant, it being a part of a tract Survey d
 to Robert Love by virtue of his warrant dated the 15th
 of October 1784

David McMicken S.S.

To Jacob Spangler Esqr. }
 Surveyor General }

IN TESTIMONY that the above is a copy of the original remaining on file in
 the Department of Internal Affairs of Pennsylvania, made
 conformably to an Act of Assembly approved the 16th day of
 February, 1833, I have hereunto set my Hand and caused
 the Seal of said Department to be affixed at Harrisburg,
 this second day of September 1902

James W. Pitt
 Secretary of Internal Affairs.